



Name \_\_\_\_\_

# Metaphor or Simile?

Circle whether the sentence is a metaphot or simile.

What is a Simile? A simile is a way of describing something by comparing it to something else using 'like' or 'as', usually in an interesting or imaginative way.

What is a Metaphor? A metaphor is a comparison between two things that are not related to each other. This often done in a silly or playful way. A metaphor does NOT use the words "like" or "as."

My cat is as fast as a cheetah. M or S

He was as strong as a lion. M or S

The room was as big as a house. M or S



**PREVIEW**

Please login or register to download the printable version of this worksheet.

[www.allkidsnetwork.com](http://www.allkidsnetwork.com)

The blanket was as soft as a kitten. M or S

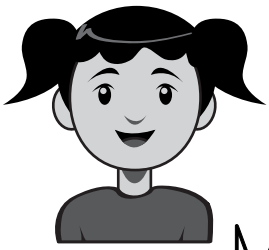
You must be pulling my leg. M or S

The horse was as big as a house. M or S

He had stars in his eyes. M or S

She was as white as a sheet. M or S





Name \_\_\_\_\_

# Metaphor or Simile? Answers

Circle whether the sentence is a metaphot or simile.

What is a Simile? A simile is a way of describing something by comparing it to something else using 'like' or 'as', usually in an interesting or imaginative way.

What is a Metaphor? A metaphor is a comparison between two things that are not related to each other. This often done in a silly or playful way. A metaphor does NOT use the words "like" or "as."

My cat is as sweet as sugar. 1. S

He w 3

The r 4. ✓

The blanket was as soft as a kitten. 4. S

You must be pulling my leg. 5. M

The horse was as big as a house. 6. S

He had stars in his eyes. 7. M

She was as white as a sheet. 8. S



## PREVIEW

Please login or register to download  
the printable version of this worksheet.

[www.allkidsnetwork.com](http://www.allkidsnetwork.com)

